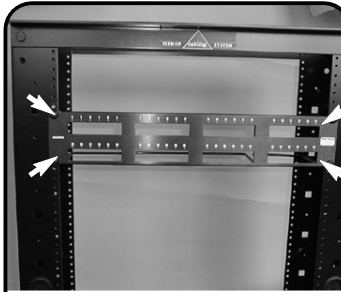
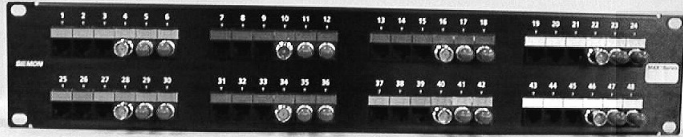
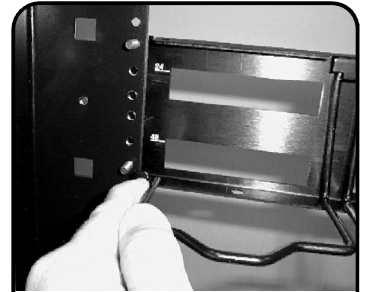


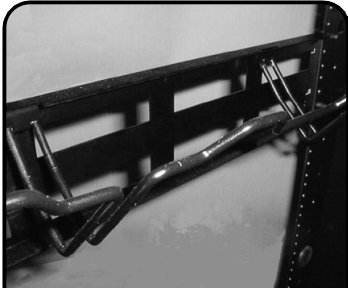
MAX[®] Patch Panel Instructions



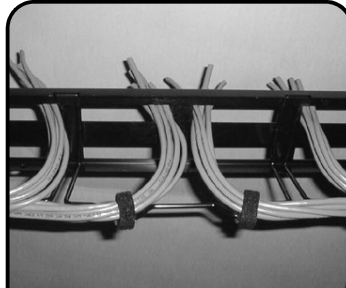
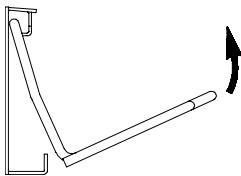
1 Using the #12-24 machine screws and washers provided, mount the patch panel to the desired position on an 19" relay rack or equivalent.



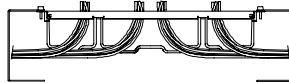
2 The MAX Patch Panel comes with rear cable manager pre-installed. In applications where the rear cable manager is not used, it can be removed by un-hooking the outside legs...



3 ...and rotating the cable manager outward.



4 With rear cable manager in place, cut cables to length for termination (approximately 100-130mm (4-5 inches) of cable from rear management bar).

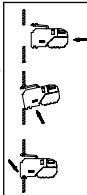


Top View

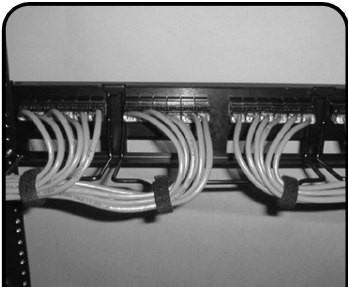


5 Terminate MAX modules and install into patch panel according to the instructions that accompanied the MAX modules.

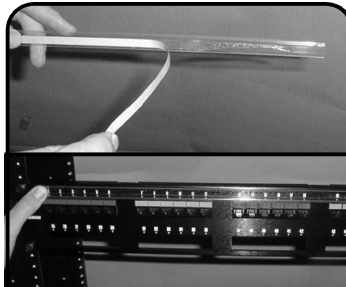
Note: Flat MAX modules are recommended for patch panels and angled MAX modules are recommended for the work area.



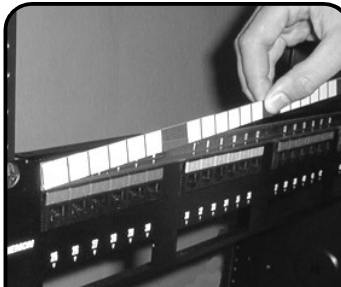
6 Install color coded icons (as shown above) or hinged doors (as illustrated) provided with modules into area above MAX modules to secure modules into panel. (See MAX module instructions for additional details.)



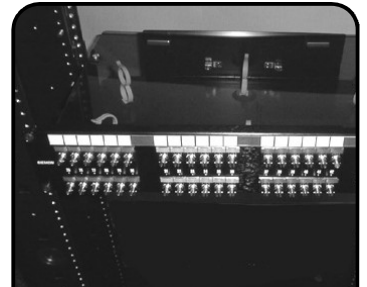
7 After MAX modules are terminated and installed in patch panel, dress cables on rear manager with cable ties provided or Siemon VCM-series cable managers (available separately, see Ordering Information).



8 Install optional label holder by removing paper from adhesive back and adhering to front of patch panel just above rows of MAX modules.



9 Insert paper label into label holder by separating the plastic label holder and inserting paper label between layers of the plastic holder.



10 When using fiber optic MAX modules, an optional fiber management tray is available separately (see Ordering Information). See instructions included with fiber management tray for proper installation.

Note: The rear cable management bar must be removed prior to installation of fiber management tray.

MAX Patch Panel Instructions

To assist safe installations, comply with the following:

- A. Use caution when installing or modifying telecommunications circuits.
- B. Never touch uninsulated wire terminals unless the circuit has been disconnected.
- C. Never install this device in a wet location.
- D. Never install wiring during a lightning storm.

Lors de l'installation, respectez les consignes de sécurité suivantes:

- A. Utiliser avec prudence lors de l'installation ou de la modification circuits de télécommunications.
- B. Ne jamais toucher les bornes de fil métallique non isolés sauf si le circuit a été débranché.
- C. Ne jamais installer cet appareil dans un endroit humide.
- D. Ne jamais installer pendant un orage.

To ensure you have the latest revision to this document,
please visit: <http://www.siemon.com/us>

Global Headquarters
Watertown, Connecticut USA
Tel: (1) 866-548-5814

For a complete listing of our global offices visit our web site

