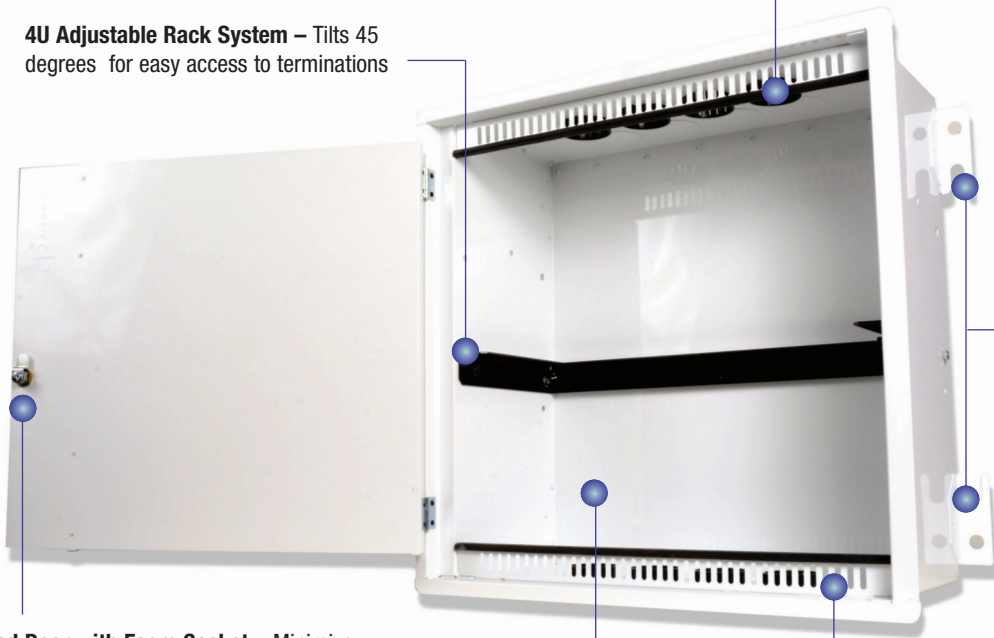


# Passive Ceiling Zone Enclosure

The Passive Ceiling Zone Enclosure is a flexible, economic solution to support zone cabling in a variety of enterprise workspaces, enabling shorter easy-to-manage connections directly to building devices such as LED lights, security cameras, wireless access points or building automation controllers, or to outlets serving voice, data or other systems. Designed to meet UL 2043 plenum requirements and install flush within a 2 X 2 ft. drop ceiling tile space, this lightweight EIA/ECA-310-E compliant ceiling enclosure is low profile while offering a 4U adjustable rack system with a recommended maximum 96-port count for copper cabling.

**Ample Cable Entry Knockouts and Plastic Cable Bushings –** Facilitates routing cables in and out of the enclosure while protecting cables from sharp edges

**4U Adjustable Rack System –** Tilts 45 degrees for easy access to terminations



**Multiple Mounting Options –** Accommodates threaded rod or guide wires

**Hinged Door with Foam Gasket –** Minimize vibration and available with lock or thumbblatch

**Lightweight –** Only 8kg (18 lbs.) for easy overhead installation

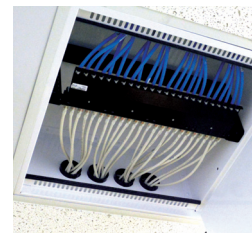
**Stylish Vents –** Enables proper airflow and heat dissipation for remote power applications



**Aesthetically Pleasing –** Installs flush within drop ceiling and cut ceiling panels easily slide into the door to blend into decor.



**Adjustable –** Fully adjustable 4U rack system supports a load capacity of 31.7 kg (70 lbs.) with less depth than other ceiling enclosures.



**Accessibility –** Hinged door and tilting bracket enable easy access to ports to facilitate terminations in a cost-effective zone cabling topology.

## Ordering Information:

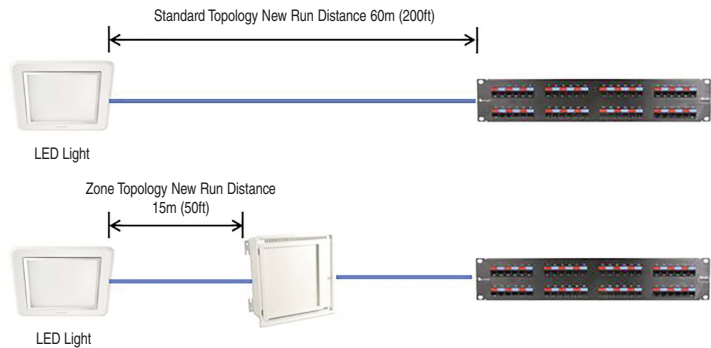
Part #	Description
ZU-C4P-L02	Passive Ceiling Zone Enclosure, 4U, white, key lock. Includes 8 plastic bushings
ZU-C4P-T02	Passive Ceiling Zone Enclosure, 4U, white, thumb lock. Includes 8 plastic bushings
ZU-CN2-M	Optional 2-inch metal chase nipple. Sold in increments of 1.



External Dimensions:  
 Height: 610mm (2 ft.)  
 Width: 610mm (2 ft.)  
 Depth: 257mm (10.125 in.)

## SPECIFICATIONS

<b>Weight</b>	8 kg (18 lbs.)
<b>Load Rating</b>	Static: 31.7kg (70 lbs.)
<b>Color</b>	White
<b>Cable Access Openings</b>	16 (8 per side) 50mm (2 in.)
<b>Material</b>	15 AWG Aluminum (Door is 16 AWG)
<b>Material Compliance</b>	RoHS, Lead free, Halogen free, PVC free
<b>Finish</b>	Textured powder coat
<b>Standards Compliance</b>	EIA/ECA-310-E UL 1863 Meets UL 2014 Plenum Requirements



Example 60m (200 ft) traditional and zone cabling links depicting new cabling length required to support the addition of a new LED light.

## Zone Cabling ROI

While dependent upon the exact number of moves, adds, and changes (MACs) performed per year, typical zone cabling plants of any size planned with 25% spare port availability not only significantly reduce client disruption, but allow the building owner to recoup the cost of the extra port capacity within a two to five year span or after reaching the ROI threshold (i.e. either 14 moves and 17 adds or 16 moves and 20 adds depending upon cabling type). For more information please visit [www.siemon.com/convergeit](http://www.siemon.com/convergeit).

Because we continuously improve our products, Siemon reserves the right to change specifications and availability without prior notice.

**Worldwide Headquarters  
 North America**  
 Watertown, CT USA  
 Phone (1) 860 945 4200 US  
 Phone (1) 888 425 6165

**Regional Headquarters  
 Europe/Russia/Africa**  
 Chertsy, Surrey, England  
 Phone (44) 0 1932 571771

**Regional Headquarters  
 China**  
 Shanghai, P.R. China  
 Phone (86) 215385 0303

**Regional Headquarters  
 Latin America**  
 Bogota, Colombia  
 Phone (571) 657 1950/51/52

**Regional Headquarters  
 Middle East**  
 Dubai, United Arab Emirates  
 Phone (971) 4 3689743  
 Phone (971) 50 5518716

**Regional Headquarters  
 Asia/Pacific**  
 Frenchs Forest  
 Sydney, Australia  
 Phone (86) 21 5385 0303

**Siemon Interconnect  
 Solutions**  
 Watertown, CT USA  
 Phone (1) 860 945 4213 US  
[www.siemon.com/SIS](http://www.siemon.com/SIS)