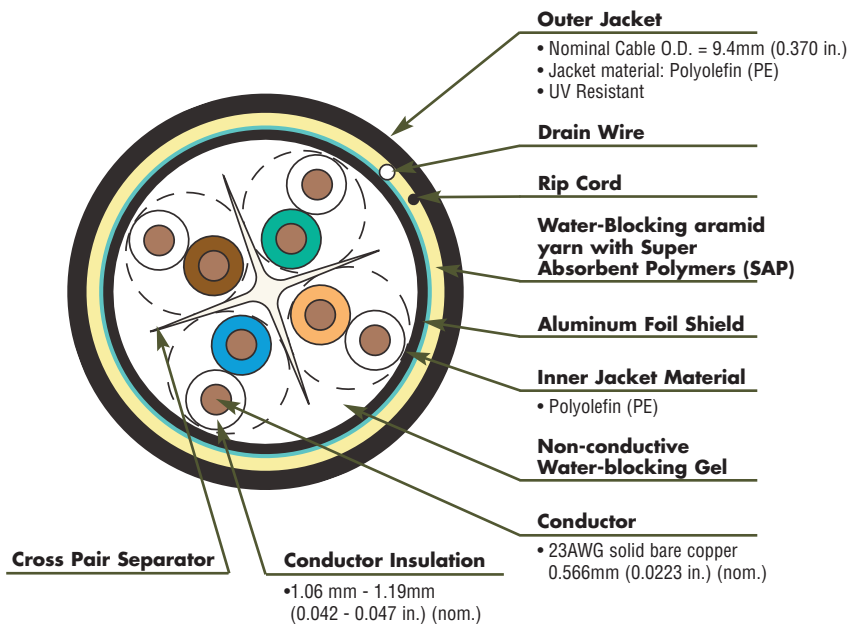
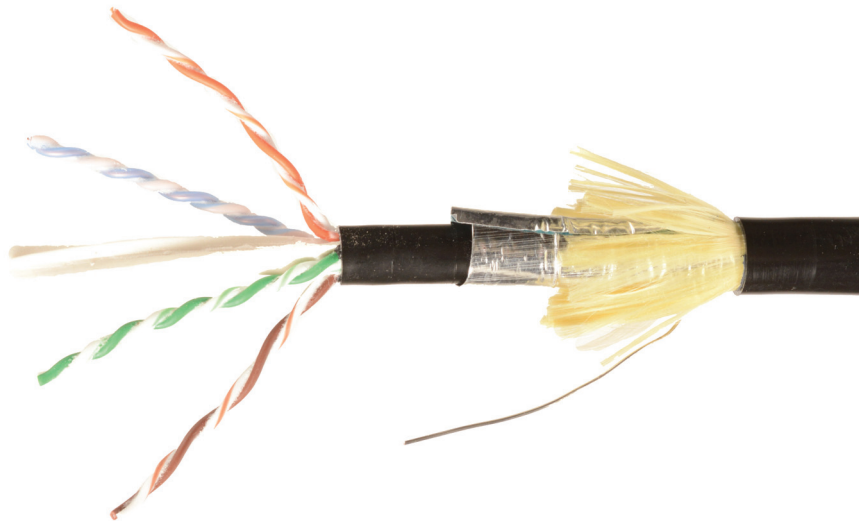


Category 6A F/UTP Shielded OSP Cable - GLOBAL

Siemon's category 6A F/UTP shielded outside plant (OSP) cable delivers TIA and ISO performance requirements for shielded category 6A/class EA. This robust shielded cable is designed to support the latest applications in outside wet environments, including 10GBASE-T, PoE+ and HDBaseT. Suitable for direct burial, lashed aerial, duct and underground conduit installations, the cable's four pairs are segregated by an innovative separator, filled with a non-conductive water-blocking gel to prevent moisture ingress and then surrounded by an inner polyolefin jacket. The cable's rugged UV-resistant outer jacket is then applied over a layer of water-blocking aramid yarn with a super absorbent polymer and an aluminum foil shield for superior RFI and EMI protection.



HIGHLIGHTS

- For use in direct burial, lashed aerial, duct and underground conduit applications
- Supports all applications designed to operate over category 6A or lower rated systems.
- Sequential measurement marking on jacket

CONSTRUCTION

- Water blocking construction (aramid yarn & gel)
- UV-resistant polyethylene (PE) jacket
- F/UTP shielded OSP, 4-pair

STANDARDS

- ANSI/TIA-568-C.2 Category 6A
- ISO 11801 Class EA
- RoHS
- IEC 61156-5 Category 6A
- ICEA-107-2012
- REACH

APPLICATIONS SUPPORT

- 10BASE-T
- 100BASE-T
- 1000BASE-T
- 10GBASE-T
- HDBase-T
- IEEE 802.3af (PoE), IEEE 802.3at (PoE+)

Product Information

ELECTRICAL SPECIFICATIONS

DC Resistance	<7.32Ω/100m
DC resistance Unbalance	5%
Mutual Capacitance	5.6 nF/100m
Capacitance Unbalance	<330 pF/100m
NVP	66%
TCL	30-10log(f/100)dB
Delay Skew	≤45ns/100m

PHYSICAL PROPERTIES

Pulling Tension (max)	110N (25 lbf)
Bend Radius (min)	76mm (3 in.)
Installation Temperature	-20 to 70°C (-4 to 158°F)
Storage Temperature	-40 to 70°C (-40 to 158°F)
Operating Temperature	-40 to 70°C (-40 to 158°F)

TRANSMISSION PERFORMANCE

GUARANTEED WORSE CASE

SIEMON TYPICAL

Frequency (MHz)	Insertion Loss (dB/100m)		NEXT (dB)		PS NEXT (dB)		ACR (dB)		PS ACR (dB)		ACR-F (dB)		PS ACR-F (dB)		Return Loss (dB)		Propagation Delay** (ns)	
	Guaranteed	Typical	Guaranteed	Typical	Guaranteed	Typical	Guaranteed	Typical	Guaranteed	Typical	Guaranteed	Typical	Guaranteed	Typical	Guaranteed	Typical	Guaranteed	Typical
1.0	-2.1	-1.3	-75.3	-95.6	-73.3	-94.9	-73.2	-94.3	-71.2	-93.5	-73.3	-93.8	-71.3	-91.1	-20.0	-28.5	597	574
4.0	-3.8	-3.0	-66.3	-86.3	-64.3	-83.2	-62.5	-83.0	-60.5	-80.1	-61.3	-82.3	-59.3	-79.2	-23.0	-24.6	578	570
10.0	-5.9	-5.0	-60.3	-79.0	-58.3	-76.9	-54.4	-73.9	-52.4	-71.8	-53.3	-72.8	-51.3	-70.7	-25.0	-29.4	572	566
16.0	-7.5	-6.4	-57.2	-74.3	-55.2	-71.8	-49.8	-67.8	-47.8	-65.0	-49.2	-67.9	-47.2	-65.6	-25.0	-28.9	570	565
20.0	-8.4	-7.2	-55.8	-76.5	-53.8	-72.5	-47.4	-68.8	-45.4	-65.2	-47.3	-67.2	-45.3	-64.9	-25.0	-27.0	569	565
31.25	-10.5	-9.0	-52.9	-73.1	-50.9	-70.6	-42.4	-63.4	-40.4	-60.9	-43.4	-63.5	-41.4	-62.5	-23.6	-29.2	567	564
62.5	-15.0	-12.9	-48.4	-69.7	-46.4	-66.6	-33.4	-56.1	-31.4	-52.8	-37.4	-57.6	-35.4	-54.9	-21.5	-27.7	565	563
100.0	-19.1	-16.4	-45.3	-66.0	-43.3	-64.3	-26.2	-48.6	-24.2	-46.9	-33.3	-56.8	-31.3	-55.0	-20.1	-26.3	564	563
200.0	-27.6	-23.5	-40.8	-62.0	-38.8	-58.9	-13.2	-38.2	-11.2	-35.2	-27.3	-46.7	-25.3	-44.7	-18.0	-28.0	563	562
250.0	-31.1	-26.5	-39.3	-58.8	-37.3	-57.9	-8.3	-32.0	-6.3	-29.3	-25.3	-46.0	-23.3	-44.4	-17.3	-25.3	563	562
300.0	-34.3	-29.2	-38.1	-60.2	-36.1	-56.4	-3.9	-29.9	-1.9	-25.5	-23.8	-43.8	-21.8	-42.4	-17.3	-23.2	563	562
400.0	-40.1	-34.2	-36.3	-58.2	-34.3	-55.0	3.8	-20.3	5.8	-17.3	-21.3	-43.7	-19.3	-40.0	-17.3	-20.6	562	562
500.0	-45.3	-38.5	-34.8	-55.3	-32.8	-54.0	10.4	-15.7	12.4	-13.5	-19.3	-42.4	-17.3	-39.0	-17.3	-19.9	562	562
550.0*	-	-40.7	-	-56.5	-	-52.9	-	-10.3	-	-6.7	-	-39.0	-	-36.6	-	-20.5	-	562
625.0*	-	-43.9	-	-54.0	-	-51.5	-	-6.8	-	-4.4	-	-36.4	-	-35.4	-	-17.3	-	562
750.0*	-	-49.4	-	-47.0	-	-45.5	-	3.2	-	7.4	-	-33.3	-	-31.9	-	-15.3	-	562

* Values for frequencies beyond industry requirements are for information only.

All performance based on 100 meters (328 ft.).

** Maximum distance limitations are 85m (279ft) - Permanent Link and 95m (312ft) - Channel due to a degradation in propagation delay from water blocking gel.

Part

Description

9A604-A5-01-R1A. Category 6A Outside Plant Direct Burial Cable, 4-pair, 23-AWG, F/UTP, Black, 305m (1000 ft.) Reel

Because we continuously improve our products, Siemon reserves the right to change specifications and availability without prior notice.

NORTH AMERICA

Watertown, CT USA
Phone (1) 860 945 4200 US
Phone (1) 888 425 6165 Canada

EUROPE/MIDDLE EAST/AFRICA

Surrey, England
Phone (44) 0 1932 571771

ASIA/PACIFIC

Shanghai, P.R. China
Phone (86) 21 5385 0303

LATIN AMERICA

Bogota, Colombia
Phone (571) 657 1950/51/52

