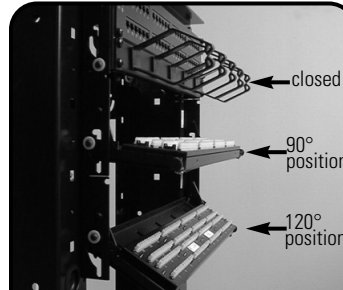
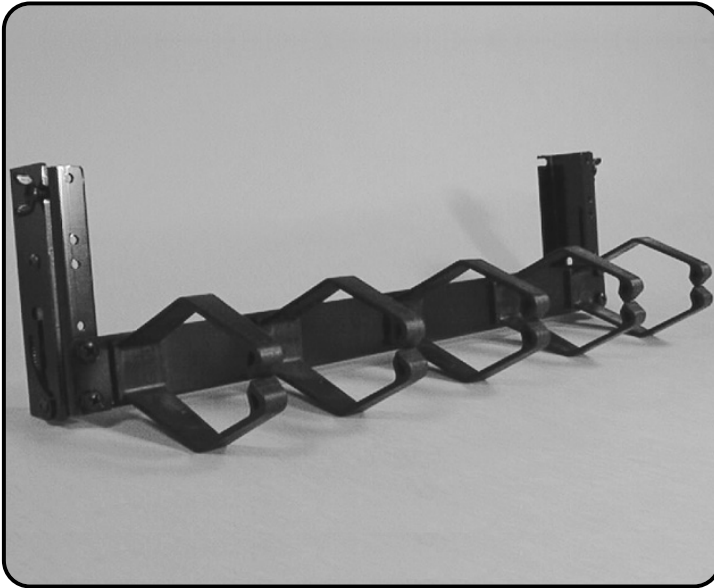


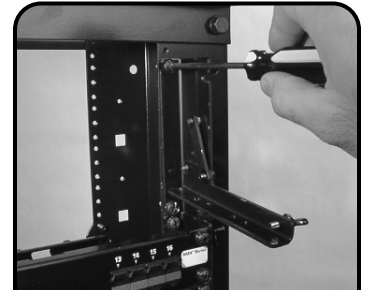
Panel Access Hinge (PH-3) Instructions



1 The Panel Access Hinge (PH-3) with integral wire management is designed to be rack mounted to a 19 inch relay rack or wall mounted to a standoff bracket.

Figure 1 shows PH-3 hinges with mounted patch panels in the closed position and in two sturdy punch down positions of 90° and 120°.

Note: Remove 1/4 turn wire managers to open stacked hinges.



2 To mount the PH-3 to a rack or standoff bracket, place the PH-3 in the 90° position. Attach the #12-24 mounting screws and washers (provided) to the top and bottom mounting holes. Center and align the PH-3 with the inside edge of the rack or standoff bracket rails.

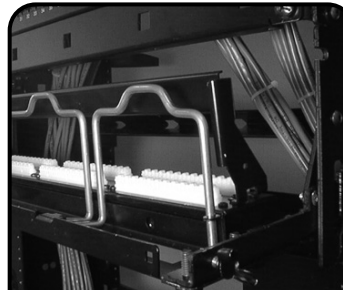


3 Ensure smooth operation of the hinge prior to mounting patch panels. Proper alignment of the PH-3 uprights ensures free operation of the hinge once patch panels are mounted.



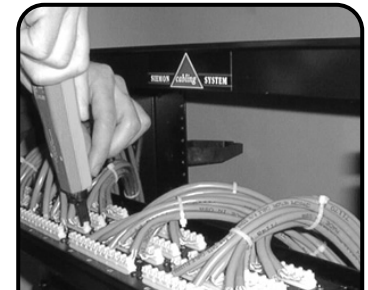
4 Position the PH-3 in the closed position and mount the desired 19 inch patch panels above the wire management panel. The 3 RMS PH-3 will mount one 2 RMS panel or two 1 RMS panels.

Note: Check hinge action again for smooth operation. Panel adjustments may need to be made.



5 Rear wire management included with some panel types can be used as long as the rear wire manager allows the hinge action to operate properly. Figure 7 shows panels with rear wire management attached.

Note: Test the rear wire manager for clearance prior to terminating cables to the patch panel(s). Allow clearance for terminated cables.



6 Open the PH-3 to the desired termination position (90° or 120°). Dress and terminate the cables to the patch panel(s).

Note: Care should be taken to prevent cables from interfering with hinge action.

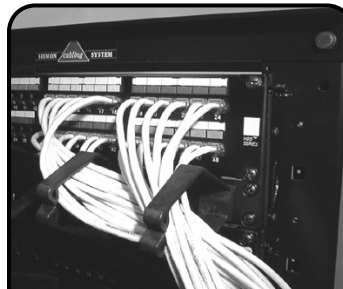


7 Close the PH-3 securing the wing head screws. The PH-3 has two wing head screws to hold it in the closed position. These screws are located at the top of the PH-3, one on each side, and are used to eliminate the need for tools to operate the hinge. Picture shows 1/4 turn wire manager in final position, see step 8.



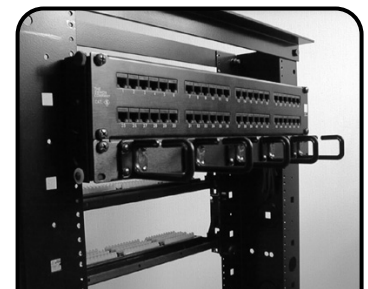
8 The PH-3 is provided with a horizontal wire manager panel which holds five 1/4-turn removable wire managers (included). The cable management panel is less than one rack space high to allow clearance for the PH-3 to operate in a stacked scenario.

Note: 1 RMS = 44.5mm (1.75 in.)



9 Attach and dress patch cords to the front of the panels and through the wire managers.

When PH-3 brackets are stacked, 1/4-turn wire managers need to be removed to open the PH-3. Patch cords need not be removed to open the PH-3.



10 Figure 10 shows how a standard 1 RMS wire manager can be mounted in place of the provided wire manager using the two top mounting holes only.

The standard wire manager must be centered and square to the PH-3 uprights to allow the hinge to operate. If stacked, the wire manager would need to be removed before hinging open.

Panel Access Hinge (PH-3) Instructions

To assist safe installations, comply with the following:

- A. Use caution when installing or modifying telecommunications circuits.
- B. Never touch uninsulated wire terminals unless the circuit has been disconnected.
- C. Never install this device in a wet location.
- D. Never install wiring during a lightning storm.

Global Headquarters

Watertown, Connecticut USA

Tel: (1) 866-548-5814

For a complete listing of our global offices visit our web site

