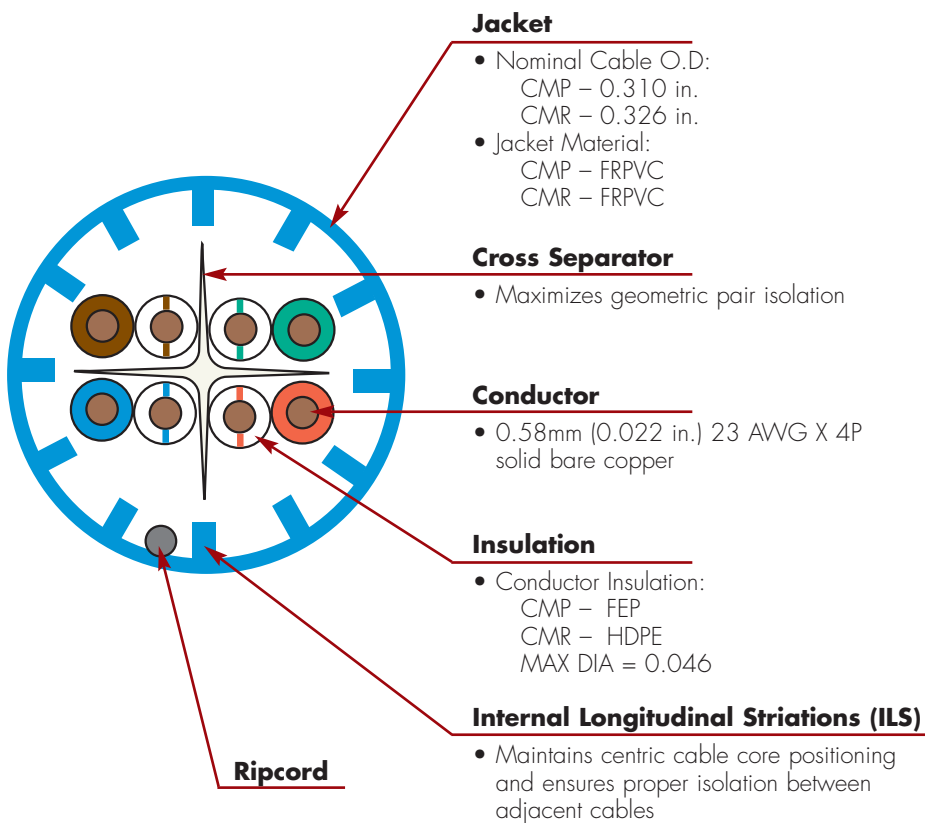
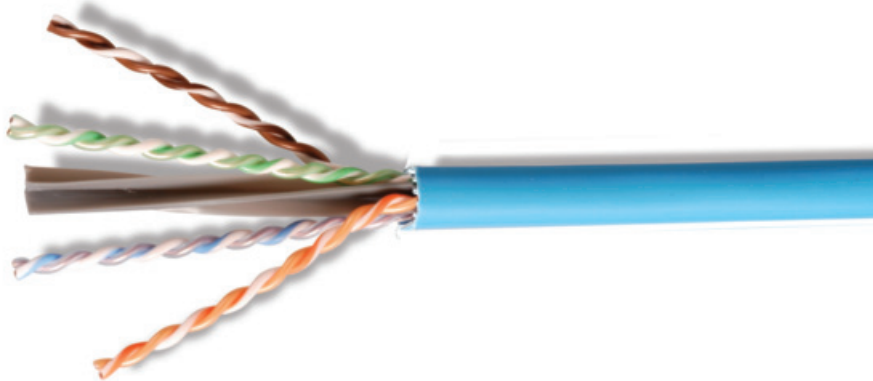


CATEGORY 6A UTP CABLE - US

Siemon's Category 6A UTP cable provides channel performance exceeding TIA and ISO/IEC 6A requirements when used with Z-MAX™ 6A UTP connectivity. Siemon's category 6A UTP cable with cross separator uses a central pair separator for optimal pair-to-pair cross-talk isolation as well as Internal Longitudinal Striation (ILS™) jacket construction to reduce alien crosstalk (AXT) coupling between adjacent cables.



CONSTRUCTION

- Reverse sequential numbering
- Round compact design jacket
- Jacket material is lead free

STANDARDS COMPLIANCE

- ANSI/TIA-568-C.2
- IEC 61156-5 Ed 2.0
- ISO/IEC 11801 Ed 2.2
- UL CMP and CSA FT6
- UL CMR and CSA FT4

ETHERNET APPLICATIONS SUPPORT

- 10GBASE-T
 - 1000BASE-T
 - 100BASE-T
 - 10BASE-T
- Supports all applications designed for category 6A or lower cabling*

PRODUCT INFORMATION

Siemon 6A UTP

ELECTRICAL SPECIFICATIONS

DC Resistance	≤9.38 Ω/100m @20°C
DC Resistance Unbalance	≤ 4% @20°C
Mutual Capacitance	≤5.6 nF/100m
Capacitance Unbalance	≤330 pF/100m
Characteristic Impedance (ohms)	1 - 100 MHz: 100 ± 15% 100 - 200 MHz:100±22% 200 - 500 MHz:100±32%
NVP	67%
TCL	30-10log(f/100) dB
PSANEXT	62.5-15log(f/100)dB
PSAACRF	38.2-20log(f/100)dB
Delay Skew	≤ 45ns/100m
PoE	Suitable for PoE & PoE +

PHYSICAL PROPERTIES

	CMP/CMR
Pulling Tension (max)	110N (25 lbf)
Bend Radius (min)	36.5 mm
Installation Temperature	0 to 50°C
Storage Temperature	-20 to 75°C
Operating Temperature	-20 TO 60°C

TRANSMISSION PERFORMANCE



GUARANTEED WORST CASE



SIEMON TYPICAL

Frequency (MHz)	Insertion Loss (dB)		NEXT (dB)		PS NEXT (dB)		ACR (dB)		PSACR (dB)		ACR-F (dB)		PS ACR-F (dB)		Return Loss (dB)		Propagation Delay (ns)	
	Guaranteed Worst Case	Siemon Typical	Guaranteed Worst Case	Siemon Typical	Guaranteed Worst Case	Siemon Typical	Guaranteed Worst Case	Siemon Typical	Guaranteed Worst Case	Siemon Typical	Guaranteed Worst Case	Siemon Typical	Guaranteed Worst Case	Siemon Typical	Guaranteed Worst Case	Siemon Typical	Guaranteed Worst Case	Siemon Typical
1.0	2.1	1.8	75.3	86.0	73.3	82.3	73.2	84.2	71.2	80.5	73.3	91.0	71.3	85.0	20.0	33.0	570	570
4.0	3.8	3.4	66.3	77.0	64.3	73.3	62.5	73.6	60.5	69.9	61.3	79.0	59.3	73.0	23.0	35.5	552	552
10.0	5.9	5.4	60.3	71.0	58.3	67.3	54.4	65.6	52.4	61.9	53.3	71.0	51.3	65.0	25.0	38.0	545	545
16.0	7.5	6.9	57.2	68.0	55.2	64.2	49.8	61.1	47.8	57.3	49.2	67.0	47.2	61.0	25.0	35.2	543	543
20.0	8.4	7.7	55.8	67.0	53.8	62.8	47.4	59.3	45.4	55.1	47.3	65.0	45.3	59.0	25.0	35.0	542	542
31.25	10.5	9.9	52.9	64.0	50.9	59.9	42.4	54.1	40.4	50.0	43.4	61.0	41.4	55.0	23.6	33.1	540	540.4
62.5	15.0	14.3	48.4	59.0	46.4	55.4	33.4	44.7	31.4	41.1	37.4	55.0	35.4	49.0	21.5	32.2	539	538.6
100.0	19.1	18.1	45.3	56.0	43.3	52.0	26.2	37.9	24.2	33.9	33.3	51.0	31.3	45.0	20.1	31.6	538	537.6
200.0	27.6	27.3	40.8	52.0	38.8	47.8	13.2	24.7	11.2	20.5	27.3	45.0	25.3	39.0	18.0	29.8	537	536.5
250.0	31.1	31.1	39.3	50.0	37.3	46.0	8.3	18.9	6.3	14.9	25.3	43.0	23.3	37.0	17.3	28.7	536	536.3
300.0	34.3	35.0	38.1	49.0	36.1	45.0	3.9	14.0	-1.9	10.0	23.8	38.0	21.8	35.0	17.3	28.0	536	536.1
400.0	40.1	40.0	36.3	47.0	34.3	43.0	-3.8	7.0	-5.8	3.0	21.3	36.0	19.3	33.0	17.3	27.1	536	535.8
500.0	45.3	42.0	34.8	47.0	32.8	42.0	-10.4	5.0	-12.4	0.0	19.3	34.0	17.3	32.0	17.3	26.0	536	535.6
550.0*	-	43.0	-	46.0	-	42.0	-	3.0	-	-1.0	-	33.0	-	31.0	-	26.0	536	-
625.0*	-	44.9	-	46.0	-	41.0	-	1.1	-	-3.9	-	33.0	-	29.0	-	25.0	535	-
750.0*	-	49.0	-	45.0	-	41.0	-	-4.0	-	-8.0	-	32.0	-	27.0	-	25.0	535	-

*Performance for frequencies beyond TIA requirements are for information only.

All performance based on 100 meters (328 ft.).

Because we continuously improve our products, Siemon reserves the right to change specifications and availability without prior notice.

Category 6A Plenum 4-Pair UTP Cable (CMP, CSA Type FT6):

9C6P4-A5-(XX)AR1APlenum, 1000 ft. Reel

Category 6A Riser 4-Pair UTP Cable (CMR, CSA Type FT4):

9C6R4-A5-(XX)AR1ARiser, 1000 ft. Reel

Use (XX) to specify jacket color: 02 = white, 06 = blue

For other colors, contact Siemon Customer Service.

Worldwide Headquarters North America

Watertown, CT USA
Phone (1) 860 945 4200 US
Phone (1) 888 425 6165

Regional Headquarters EMEA

Europe/Middle East/Africa
Surrey, England
Phone (44) 0 1932 571771

Regional Headquarters Asia/Pacific

Shanghai, P.R. China
Phone (86) 21 5385 0303

Regional Headquarters Latin America

Bogota, Colombia
Phone (571) 657 1950