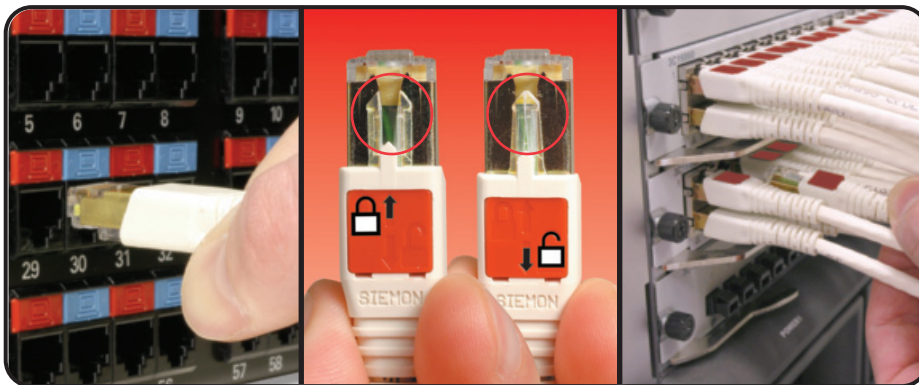
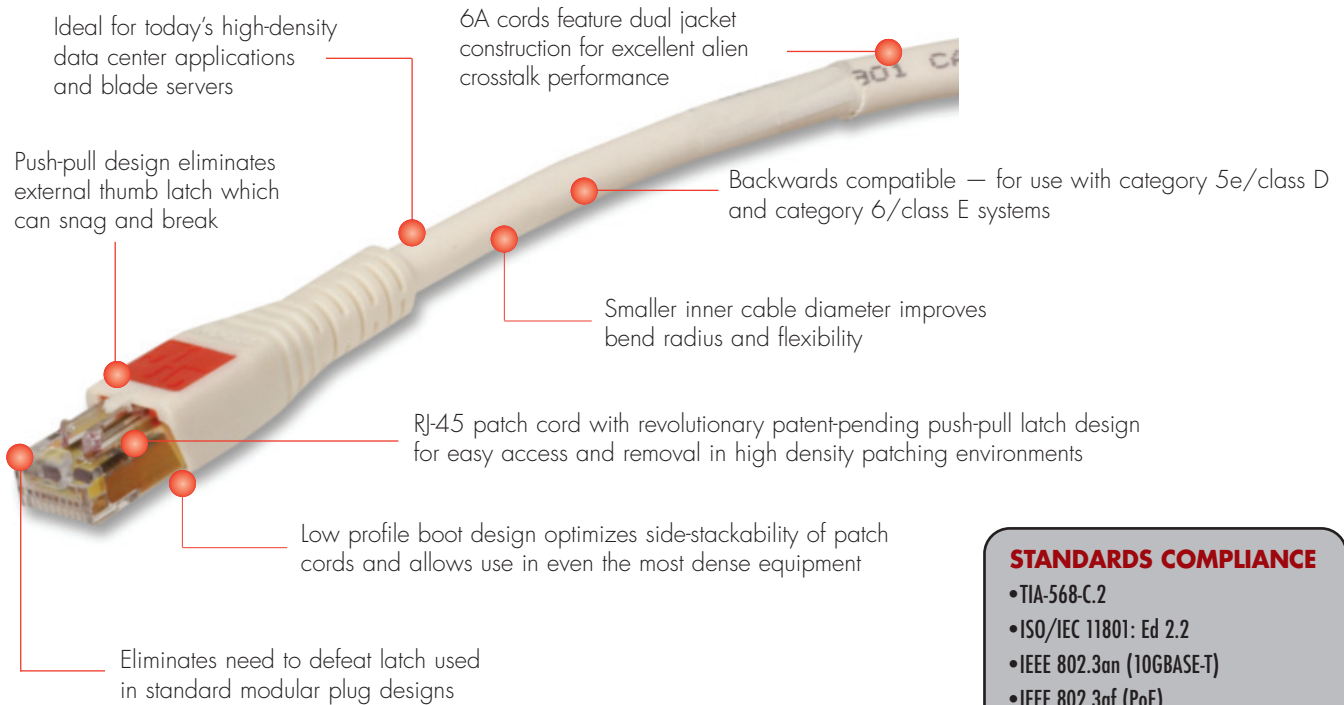


# 6A UTP BLADEPATCH®

Siemon's 6A UTP BladePatch patch cord offers a unique category 6A solution for high-density patching environments. It features an innovative push-pull boot design to control the latch, enabling easy access and removal of the cord in tight-fitting areas. The BladePatch cord is ideal for patching high density blade servers, patch panels, or any equipment with RJ-45 outlets.

Combine the BladePatch with Siemon's Z-MAX® modules, patch panels and cable for a complete category 6A channel solution, meeting or exceeding all 10GBASE-T requirements including alien crosstalk. The 6A UTP cabling system delivers unparalleled network performance today and supports multi-gigabit applications. These cords are also backwards compatible with lower category connecting hardware.



*Fits within any standard RJ45 opening*

*Simply push the boot forward to latch into the outlet and pull back to release*

*The push-pull design enables easy access and removal via the boot in tight-fitting areas*



**STANDARDS COMPLIANCE**

- TIA-568-C.2
- ISO/IEC 11801: Ed 2.2
- IEEE 802.3an (10GBASE-T)
- IEEE 802.3af (PoE)
- IEEE 802.3at (PoE+)
- IEC 60603-7
- ANSI/TIA-1096-A
- IEC 60603-7-41



# PRODUCT INFORMATION

## Performance Specification Chart:

ELECTRICAL	
Contact Resistance	10 mΩ
Input to Output Resistance	200 mΩ
Min. Dielectric Withstand Voltage (contact to contact)	1000 V DC or AC peak
Insulation Resistance	500 mΩ
Compatibility	Backwards to cat 5e and cat 6
Current Rating	1.5 A
PoE	Suitable for PoE and PoE+
Surface Transfer Impedance	< 10 mΩ/m @ 10 MHz
MECHANICAL – GENERAL	
Operating Temperature	-10 to 60 °C [14 to 140 °F]
Flammability Rating	UL 94 V-0
Green Features	RoHS, lead-free, halogen-free, PVC free
Plug Housing Material	Polycarbonate
Contact Materials	50 microns gold plating or equivalent
Plastic Materials	Flame retardant thermoplastic
Screen	360 degree enclosure
Marking	P/N, length, performance level, QC
MECHANICAL – PLUG	
Number of Plug Insertion Cycles	2500
Min. Plug Retention Force	50N
Plug Compatibility	Compatible with RJ45 outlets
Cable to Plug Tensile Strength (min)	20 lbs

MECHANICAL – CABLE (STRANDED)	
Wire Size Range (nominal)	26 AWG 7x32 Stranded tinned copper
Cable Construction	UTP dual jacketed
Cable OD (nominal)	7.37mm (0.29 in.) outer, 6.43mm (0.25 in.) inner
Wiring	T568A/B
Jacket Type	CMG
Bend Radius	25mm (1.0 in.)

### 6A UTP BladePatch:

BP6A-(XX)(X)-(XX) .....BladePatch 6A UTP patch cord with push-pull latching design, color matching cord/boot, T568A/B

Use 1st (XX) to specify cord length: (Ex: 03)

Use (X) to specify units: Blank = Feet, M = Meters

Use 2nd (XX) to specify cable color:

01 = black, 02 = white, 03 = red, 04 = gray, 05 = yellow, 06 = blue, 07 = green, 08 = violet, 09 = orange

**B** Add "B" for bulk project pack of 100 modular cords

Because we continuously improve our products, Siemon reserves the right to change specifications and availability without prior notice.

BladePatch® and Z-MAX® are trademarks of Siemon



### For additional resource information:

Visit our web site at [www.siemon.com](http://www.siemon.com)