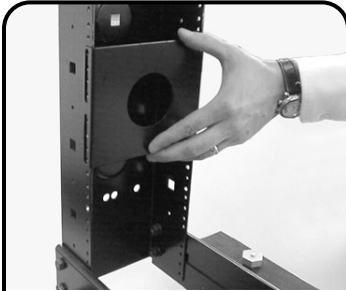
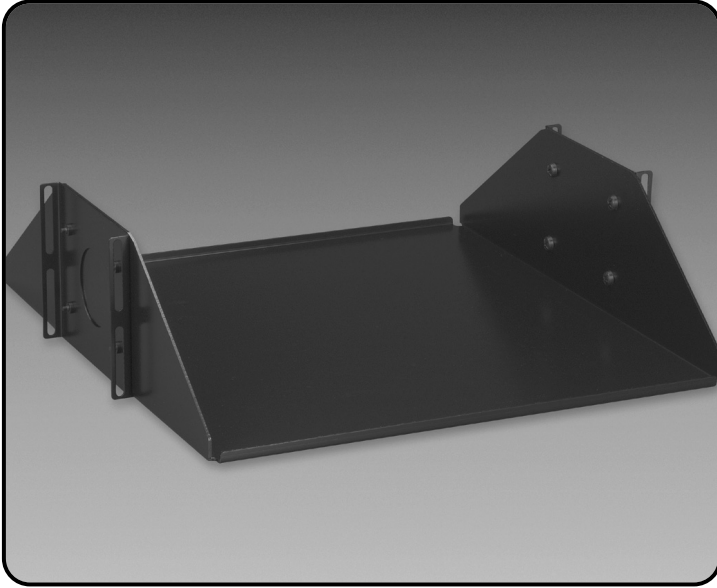
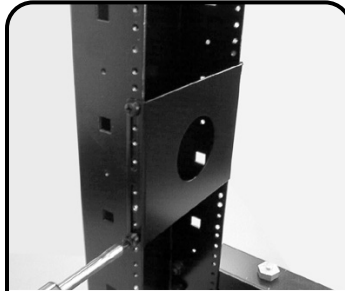


SH-D19-01 Double-Sided Shelf

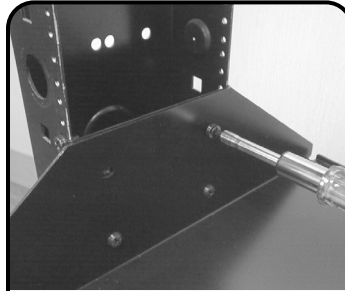


1 Place the brackets on the inside of the channels in the location where the equipment or shelving is to be mounted.



2 Secure the brackets to the rack using the #12x24 screws provided in the rear channel mounting holes only.

Note: Four screws are provided for each bracket - two for the front and two for the rear.



3 Using the #12x24 screws provided, mount the shelf to the inside portion of the bracket.

Global Headquarters

Watertown, Connecticut USA
Tel: (1) 866-548-5814

For a complete listing of our global offices visit our web site

