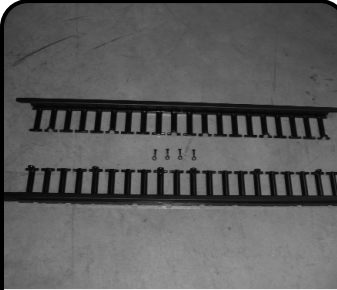
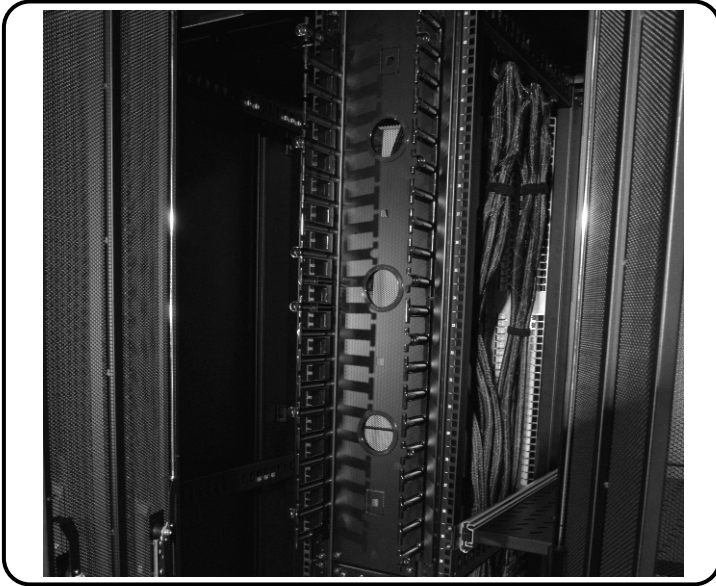



VPOD Vertical Cable Mgmt Fingers Installation



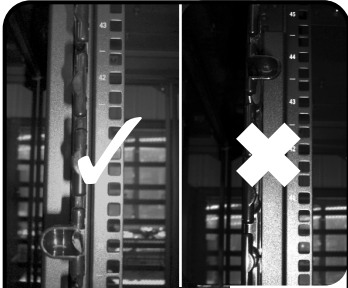
Parts Description

VPOD Vertical Cable Management Fingers
(4) Phillips Head Screws
(4) Plastic Cup Washers

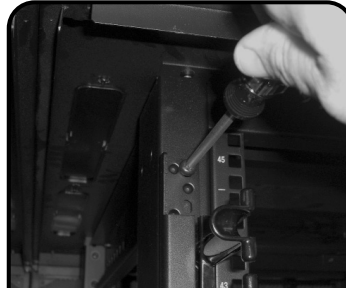


Required Tools

#2 Phillips Screw Driver



1 Locate the cable management fingers onto the frame rails as shown.
NOTE: The fingers should be oriented so that the fingers point to the outside of the cabinet as shown.



2 Secure the Cable Management Fingers to the frame rail using the 2 – Phillips Head Screws and plastic washers as shown.

To assist safe installations, comply with the following:

- A. Use caution when installing or modifying telecommunications circuits.
- B. Never touch uninsulated wire terminals unless the circuit has been disconnected.
- C. Never install this device in a wet location.
- D. Never install wiring during a lightning storm.

Global Headquarters
Watertown, Connecticut USA
Tel: (1) 866-548-5814

For a complete listing of our global offices visit our web site

