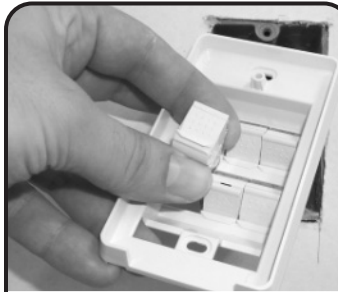
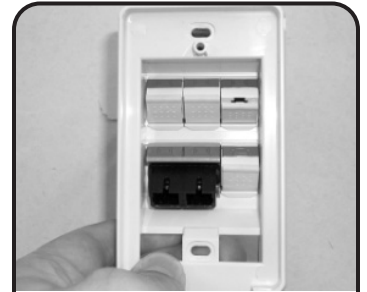


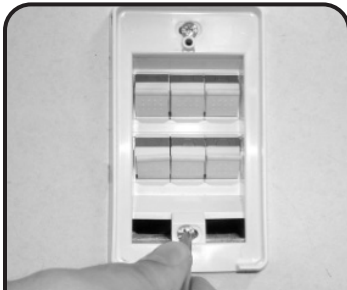
# Tamperproof Faceplate Instructions



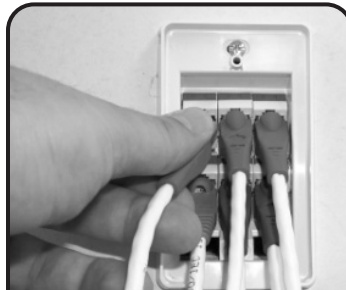
**1** Insert terminated angled MAX jacks into top of the faceplate first. When removing the jacks, remove from the bottom of the faceplate first.



**2** Insert fiber modules on bottom of the faceplate only.



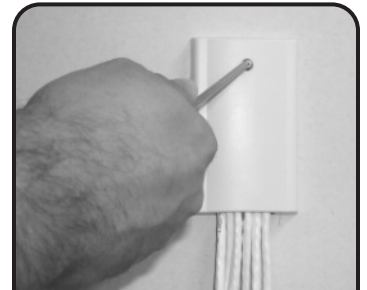
**3** Using provided screws secure faceplate to the electrical box as shown.



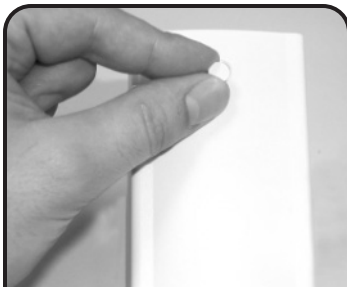
**4** Install patch cords as shown.



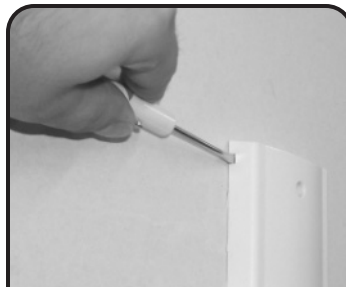
**5** Install the cover by attaching the bottom first as shown.



**6** Use either the Stardrive screw or the Phillips head screw provided to attach the cover to the faceplate.



**7** Insert decorative cap in screw hole. To remove cap, insert probepick or paper clip to pop the cap out.



**8** To remove cover, remove cover screw and insert small screwdriver into slots on the sides of the top portion of the cover.

# Tamperproof Faceplate Instructions

**Global Headquarters**

Watertown, Connecticut USA

Tel: (1) 866-548-5814

For a complete listing of our global offices visit our web site

