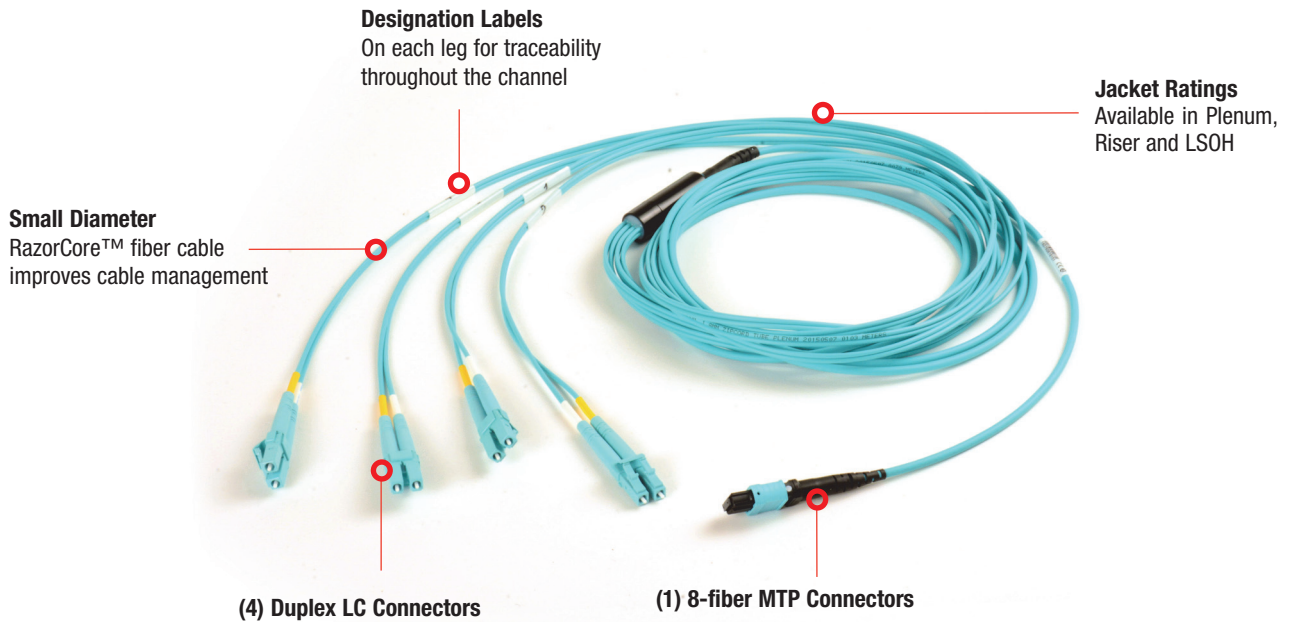


LC to MTP 4 X 10G HYBRID EQUIPMENT CORDS

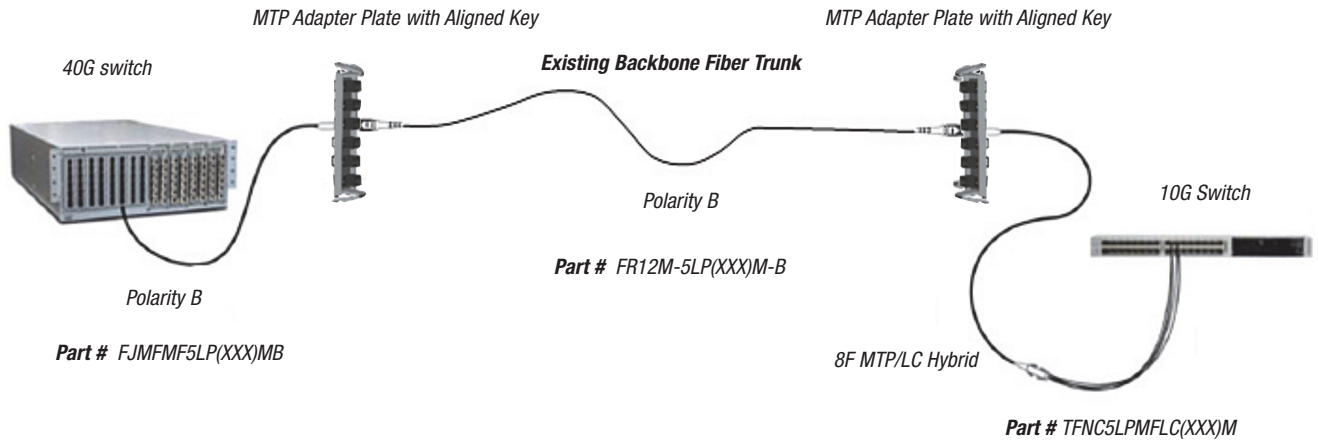
Siemon's LC to MTP 4 X 10G Hybrid Equipment Cords have (1) MTP connector on one end and (4) duplex LC connectors on the other for connection to active equipment with LC ports used in aggregation of multiple 10G ports to one 40G port.



- Specifically wired to manage polarity for transmit to receive

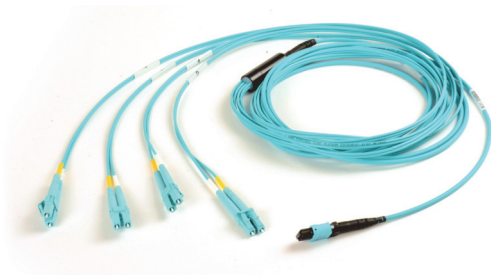
40G to 4 X 10G Channel

Example Channel Model



Ordering Information

LC TO MTP 4 X 10G HYBRID EQUIPMENT CORDS



T(X)NC(XX)(X)(XX)LC(XXX)(X)

Performance

F = Standard Loss
L = Low Loss

Strand Count

N = 8 Fibers

Pulling Eye Option

C = None

Fiber Type

5L = OM3 XGLO 300 50/125 Multimode
5V = OM4 XGLO 550 50/125 Multimode

Length Unit

F = Feet
M = Meter

Length*

Length must be 3 digits
Example: **005** = 5m
050 = 50 ft.

Side A MTP (8 Core)

MM = Male
MF = Female

Jacket Rating

P = Plenum
R = Riser
L = ISOH

Product Specifications

STANDARD LOSS ASSEMBLIES

Fiber Type		MAX Insertion (dB)		MAX Return Loss (dB)		Performance Class
		MTP	LC	MTP	LC	
5L-MM	50/125 (OM3)	0.50	0.25	20	30	XGLO® 300
5V-MM	50/125 (OM4)	0.50	0.25	20	30	XGLO 550

LOW LOSS ASSEMBLIES

Fiber Type		MAX Insertion (dB)		MAX Return Loss (dB)		Performance Class
		MTP	LC	MTP	LC	
5L-MM	50/125 (OM3)	0.20	0.15	20	30	XGLO 300
5V-MM	50/125 (OM4)	0.20	0.15	20	30	XGLO 550

CABLE - OPTICAL AND PHYSICAL SPECIFICATIONS

Cable Type	Multimode	
	XGLO 50/125 OM3 (850/1300nm)	XGLO 50/125 OM4 (850/1300nm)
Fiber Cable Attenuation MAX (db/km)	3.0/1.0	3.0/1.0
LED Bandwidth, MIN (MHz/km)	1500/500	3500/500
Effective Modal Bandwidth, MIN (MHz/km)	2000	4700
Cable Outer Jacket, Color (Per TIA-598-C)	Aqua	Aqua

CONNECTORS - PHYSICAL SPECIFICATIONS

Connector Type	IEC Intermateability Compliance	TIA Intermateability Compliance	Housing Color	Boot Color
			MM-5L/5V	MM
MTP	IEC 61754-7	TIA/EIA-604-5	Aqua	Black

**Worldwide Headquarters
North America**

Watertown, CT USA
Phone (1) 860 945 4200 US
Phone (1) 888 425 6165

**Regional Headquarters
EMEA**

Europe/Middle East/Africa
Surrey, England
Phone (44) 0 1932 571771

**Regional Headquarters
Asia/Pacific**

Shanghai, P.R. China
Phone (86) 21 5385 0303

**Regional Headquarters
Latin America**

Bogota, Colombia
Phone (571) 657 1950