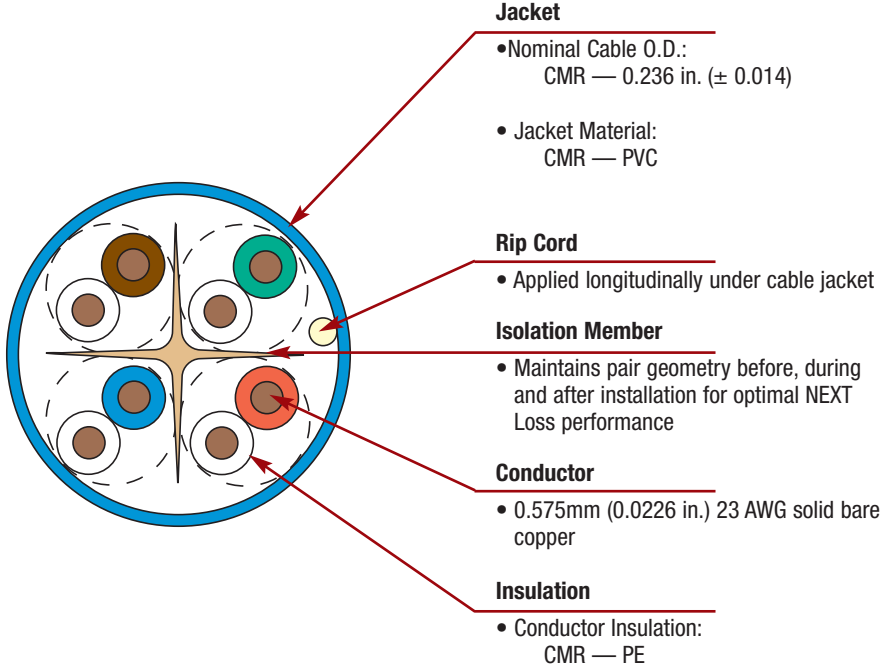
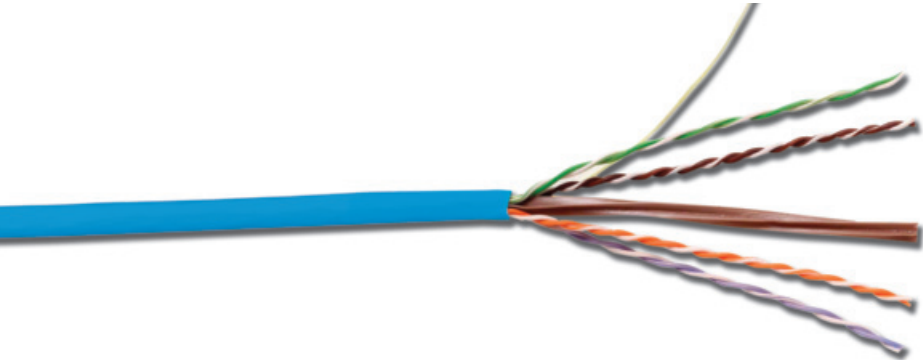




SYSTEM 6® UTP CABLE —RISER-US

System 6 cable provides significant headroom above all TIA and ISO/IEC category 6 transmission performance specifications. Combine our high performance category 6 connectivity with System 6 cable and the result is a system with superior electrical performance for optimum applications support.



HIGHLIGHTS

- Reverse sequential numbering
- Round jacket
- Center isolation member
- Jacket material is lead free

PACKAGING

- 1000 ft. reel

STANDARDS COMPLIANCE

- ISO/IEC 11801:2002 (Category 6)
- TIA 568-C.2 - 2009
- UL CMR and CSA FT4
- Transmission performance verified by UL
- RoHS compliant

ETHERNET APPLICATIONS SUPPORT

- 100BASE-T
- 100BASE-T
- 10BASE-T

Supports any application designed for category 6 or lower cabling

PRODUCT INFORMATION

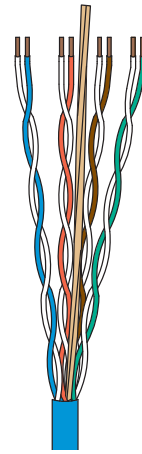
System 6® UTP Cable

ELECTRICAL SPECIFICATIONS

DC Resistance	<9.38 Ω/100m
DC Resistance Unbalance	5%
Mutual Capacitance	5.6 nF/100m
Capacitance Unbalance	<330 pF/100m
Characteristic Impedance (ohms)	1-100 MHz: 100 ± 15% 100 - 520 MHz: 100 ± 22%
NVP	CMR—65%
TCL/LCL	30-10log(f/100)dB
Delay Skew	≤ 35ns/100m

PHYSICAL PROPERTIES

	CMR
Pulling Tension (max)	110N (25 lbf)
Bend Radius (min)	25mm (1 in.)
Installation Temperature	-36 to 60°C (-32 to 140°F)
Storage Temperature	-34 to 75°C (-30 to 167°F)
Operating Temperature	-34 to 60°C (-30 to 140°F)



TRANSMISSION PERFORMANCE

GUARANTEED WORST CASE*
 SIEMON TYPICAL

Frequency (MHz)	Insertion Loss (dB)		NEXT (dB)		PS NEXT (dB)		ACR (dB)		PSACR (dB)		ACR-F (dB)		PS ACR-F (dB)		Return Loss (dB)		Propagation Delay (ns)	
	2.0	1.8	77.3	87.3	75.3	82.3	75.3	85.5	73.3	80.5	70.8	84.8	68.8	79.8	20.0	29.0	550	545
4.0	3.8	3.5	68.3	78.3	66.3	73.3	64.5	74.8	62.5	69.8	58.8	72.8	56.8	67.8	23.6	32.0	532	527
10.0	5.9	5.6	62.3	72.3	60.3	67.3	56.4	66.7	54.4	61.7	50.8	64.8	48.8	59.8	26.0	38.0	525	520
16.0	7.5	7.1	59.2	69.2	57.2	64.2	51.8	62.1	49.8	57.1	46.7	60.7	44.7	55.7	26.0	34.0	523	518
20.0	8.4	7.9	57.8	67.8	55.8	62.8	49.4	59.9	47.4	54.9	44.8	58.8	42.8	53.8	26.0	34.0	522	517
31.25	10.6	10.0	54.9	64.9	52.9	59.9	44.3	54.9	42.3	49.9	40.9	54.9	38.9	49.9	25.0	32.0	520	515
62.5	15.2	14.4	50.4	60.4	48.4	55.4	35.1	46.0	33.1	41.0	34.9	48.9	32.9	43.9	23.5	32.0	519	514
100.0	19.6	18.6	47.3	57.3	45.3	52.3	27.7	38.7	25.7	33.7	30.8	44.8	28.8	39.8	22.5	32.0	518	513
160.0	25.4	24.1	44.2	54.2	42.2	49.2	18.9	30.1	16.9	25.1	26.7	40.7	24.7	35.7	21.5	31.0	517	512
200.0	28.7	26.8	42.8	52.8	40.8	47.8	14.1	26.0	12.1	21.0	24.8	38.8	22.8	33.8	21.0	29.0	517	512
250.0	32.6	30.5	41.3	51.3	39.3	46.3	8.8	20.8	6.8	15.8	22.8	37.0	20.8	31.8	20.5	29.0	516	511
300.0*	36.1	33.7	40.1	50.0	38.1	45.0	4.0	16.3	2.0	11.3	21.3	36.0	19.3	30.0	20.1	27.0	516	511
400.0*	42.6	40.3	38.3	48.0	36.3	43.0	-4.3	7.7	-6.3	2.7	18.8	32.0	16.8	27.0	19.5	26.0	516	511
500.0*	48.5	39.9	36.8	48.0	34.8	42.0	-11.7	8.1	-13.7	2.1	16.8	31.0	14.8	26.0	19.0	25.0	516	511
550.0*	51.3	39.7	36.2	46.0	34.2	42.0	-15.1	6.3	-17.1	2.3	16.0	30.0	14.0	26.0	18.8	24.0	516	510

*Performance for frequencies above 250 MHz are for information only.

All performance based on 100 meters (328 ft.).

System 6 Riser 4-Pair UTP Cable (CMR, CSA Type FT4):

9C6R4-E3-(XX)-RXA.....Riser, 1000 ft. Reelex

Use (XX) to specify jacket color: **02 = white**, 03 = red, 04 = gray, 05 = yellow, **06 = blue**, 07 = green, 08 = violet, 09 = orange

Cable colors highlighted in red in 1000 ft. package indicate FOCUS products which are readily available. Other colors may have extended lead times and minimum purchase requirements.

Because we continuously improve our products, Siemon reserves the right to change specifications and availability without prior notice.

North America
Watertown, CT USA
Phone (1) 860 945 4200 US
Phone (1) 888 425 6165 Canada

Europe/Middle East/Africa
Surrey, England
Phone (44) 0 1932 571771

Asia/Pacific
Shanghai, P.R. China
Phone (86) 21 5385 0303

Latin America
Bogota, Colombia
Phone (571) 657 1950