

CT Cable Manager Instructions

Use the CT cable manager for proper storage of excess cable at the work area.

1. Adhere the double sided tape squares (included) to the pads at the back of the cable manager as shown in Figure 1. Use the tape to *temporarily* mount the manager to the wall.* Ensure that the elongated mounting holes of the manager align with the mounting holes of the electrical box using the one inch screws which are provided with the manager. Do not mount the manager with the screws at this time.
2. Store excess cable between inside edge and post of the cable manager as shown in Figure 2. Ensure that the cable does not interfere with the mounting holes.
Note: The cable manager will maintain a 1.21 inch bend radius in the cable.
3. Prior to mounting the faceplate onto the cable manager, remove the tape from the back of the manager.

***CAUTION:** After one hour, the tape may damage the surface on which it is mounted.

Mount the faceplate and the cable manager onto the electrical box, plaster ring, surface mount box, etc. using 1.75 inch #6-32 screws (provided).

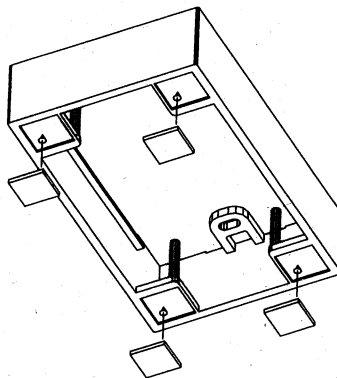


Figure 1

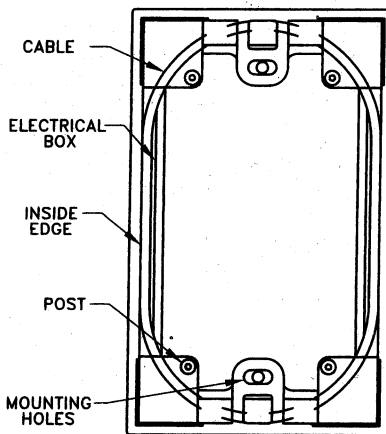


Figure 2



101 Siemon Company Drive
Watertown, CT 06795-0400 USA
Phone (860) 945-4200 • Fax (860) 945-4225

12/04 Rev. C
100.3123