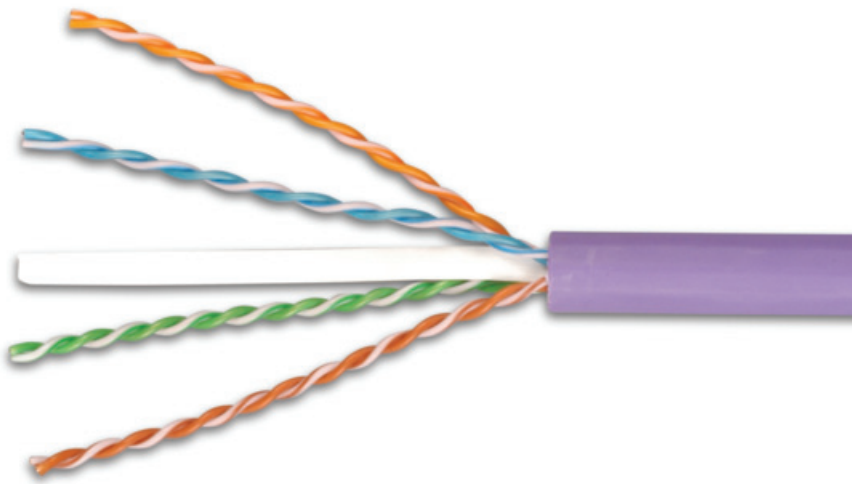


CATEGORY 6A UTP LSOH CABLE

Siemon's Category 6A LSOH cable exceeds ANSI/TIA and ISO/IEC transmission performance requirements including alien crosstalk. When combined with Z-MAX 6A UTP connectivity, the result is a channel capable of supporting 10GBASE-T operation over 100-meter, 4-connector topologies. The 6A UTP cabling system supports emerging and converging IP applications like Voice Over IP (VoIP), IP video and other 10GBase-T applications.



HIGHLIGHTS

- Center isolation member maintains pair geometry before, during and after installation for optimal NEXT performance
- Reverse sequential measurement marking on jacket

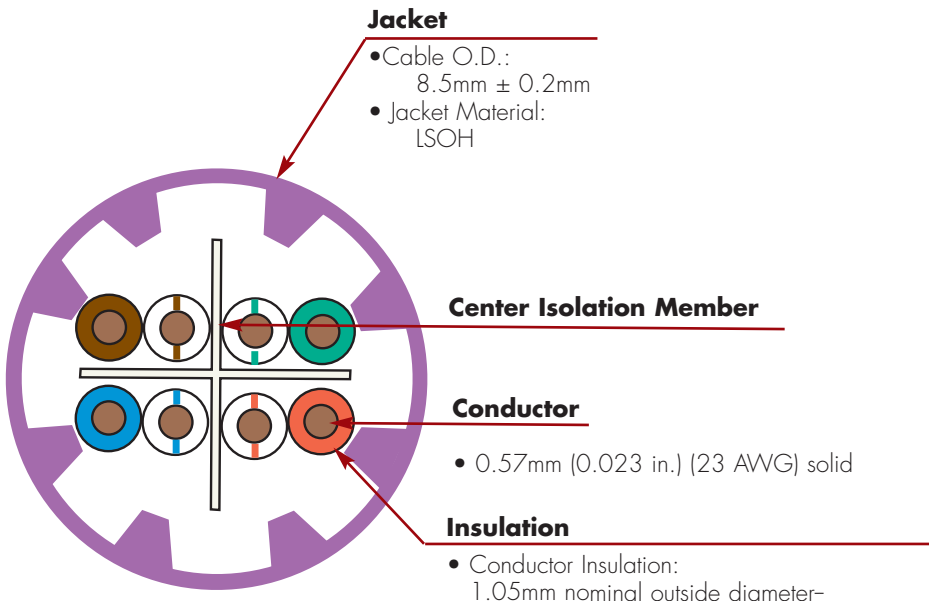
COMPLIANCE

- ISO/IEC 11801 Ed 2.2
- ANSI/TIA-568-C.2
- IEC 61156-5 Ed 2.0
- LSOH: IEC 60332-1, IEC 60754, and IEC 61034

ETHERNET APPLICATIONS SUPPORT

- 10GBASE-T
- 1000BASE-T
- 100BASE-T
- 10BASE-T

Supports all applications designed for augmented category 6 or lower cabling



PRODUCT INFORMATION

ELECTRICAL SPECIFICATIONS

DC Resistance	<9.38 Ω/100m
DC Resistance Unbalance	5%
Mutual Capacitance	5.6 nF/100m
Capacitance Unbalance	<330 pF/100m
Characteristic Impedance (ohms)	1 - 250 MHz: 100 ± 15% 100 - 750 MHz: 100 ± 22%
NVP	67%
LCL	30-10log(f/100)dB
PSANEXT	62.5-15log(f/100)dB
PSAACR-F	38.2-20log(f/100)dB
Delay Skew	≤ 45ns

PHYSICAL PROPERTIES

	LSOH
Pulling Tension (max)	110N (25 lbf)
Bend Radius (min)	45.7mm (1.8 in.)
Installation Temperature	0 to 60°C (+32 to 140°F)
Storage Temperature	-20 to 75°C (-4 to 167°F)
Operating Temperature	-20 to 60°C (-4 to 140°F)

TRANSMISSION PERFORMANCE

ISO/IEC 61156-5

SIEMON TYPICAL

Frequency (MHz)	Insertion Loss (dB)		NEXT (dB)		PSNEXT (dB)		ACR (dB)		PSACR (dB)		ACR-F (dB)		PS ACR-F (dB)		Return Loss (dB)		Propagation Delay (ns)	
	2.1	1.8	75.3	96.0	72.3	92.0	73.2	94.2	70.2	90.2	68.0	92.0	65.0	85.0	20.0	29.0	570	540
4.0	3.8	3.3	66.3	89.0	63.3	83.0	62.5	85.7	59.5	79.7	56.0	80.0	53.0	73.0	23.0	32.0	552	522
10.0	5.9	5.2	60.3	83.0	57.3	77.0	54.4	77.8	51.4	71.8	48.0	72.0	45.0	65.0	25.0	36.0	545	515
16.0	7.5	6.7	57.2	80.0	54.2	74.0	49.8	73.3	46.8	67.3	43.9	68.0	40.9	61.0	25.0	36.0	543	513
20.0	8.4	7.5	55.8	79.0	52.8	73.0	47.4	71.5	44.4	65.5	42.0	68.0	39.0	59.0	25.0	36.0	542	512
31.25	10.5	9.4	52.9	76.0	49.9	70.0	42.4	66.6	39.4	60.6	38.1	62.0	35.1	55.0	23.6	34.0	540	510
62.5	15.0	13.7	48.4	71.0	45.4	65.0	33.4	57.3	30.4	51.3	32.1	56.0	29.1	49.0	21.5	34.0	539	509
100.0	19.1	17.8	45.3	68.0	42.3	62.0	26.2	50.2	23.2	44.2	28.0	52.0	25.0	45.0	20.1	33.0	538	507
200.0	27.6	25.8	40.8	64.0	37.8	58.0	13.2	38.2	10.2	32.2	22.0	46.0	19.0	39.0	18.0	31.0	537	506
250.0	31.1	29.2	39.3	62.0	36.3	56.0	8.3	32.8	5.3	26.8	20.0	44.0	17.0	37.0	17.3	31.0	536	506
300.0	34.3	31.5	38.1	61.0	35.1	55.0	3.9	29.5	0.9	23.5	18.5	42.0	15.5	35.0	17.3	29.0	536	505
350.0	37.2	33.8	37.1	60.0	34.1	54.0	-0.1	26.2	-3.1	20.2	17.1	41.0	14.1	34.0	17.3	28.0	535	505
400.0	40.1	37.9	36.3	59.0	33.3	53.0	-3.8	21.1	-6.8	15.1	16.0	40.0	13.0	33.0	17.3	27.0	535	505
500.0	45.3	42.1	34.8	57.0	31.8	51.0	-10.4	14.9	-13.4	8.9	14.0	39.0	11.0	32.0	17.3	26.0	536	505
625.0*	-	44.9	-	53.0	-	50.0	-	8.1	-	5.1	-	36.0	-	29.0	-	25.0	-	505
750.0*	-	49.0	-	51.0	-	49.0	-	2.0	-	0.0	-	35.0	-	27.0	-	25.0	-	504

*Performance for frequencies beyond ISO requirements are for information only.

All performance based on 100 meters (328 ft.).

Category 6A™ UTP LSOH 4-Pair Cable:

9C6L4-A5LSOH (IEC 60332-1), Violet Jacket, 305m (1000 ft.) Reel

Because we continuously improve our products, Siemon reserves the right to change specifications and availability without prior notice.

For additional resource information:

Visit our web site at www.siemon.com

**Worldwide Headquarters
North America**
Watertown, CT USA
Phone (1) 860 945 4200 US
Phone (1) 888 425 6165

**Regional Headquarters
EMEA**
Europe/Middle East/Africa
Surrey, England
Phone (44) 0 1932 571771

**Regional Headquarters
Asia/Pacific**
Shanghai, P.R. China
Phone (86) 21 5385 0303

**Regional Headquarters
Latin America**
Bogota, Colombia
Phone (571) 657 1950